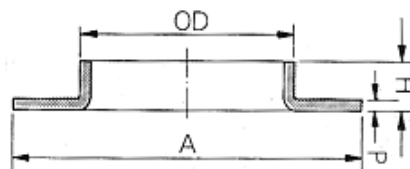


## Descrição

Conexões de aço inoxidável, com ou sem costura; fabricadas conforme normas ANSI e DIN.

**Características:** Fabricadas conforme normas ANSI ou DIN. Em aço inoxidável AISI 304, 316, 304L e 316L.

FIG.  
78



Pestana

Dimensões								
Nominal	Diâmetro externo		Espessura da Parede		Altura total		Diâmetro	
DN	OD		P		H		A	
Pol	ANSI mm	DIN mm	ANSI mm	DIN mm	ANSI mm	DIN mm	ANSI mm	DIN mm
3/4"	26,7	-	2,0	-	8,0	-	55,0	-
1"	33,4	25,4	2,0	2,0	10,0	8,0	62,0	55,0
1.1/4"	42,2	31,7	2,5	2,0	12,0	9,0	72,0	62,0
1.1/2"	48,3	38,1	2,5	2,0	12,0	10,0	80,0	72,0
2"	60,3	50,8	3,0	2,0	14,0	12,0	100,0	85,0
2.1/2"	73,0	63,5	3,0	2,0	14,0	13,0	118,0	100,0
3"	88,9	76,2	3,0	2,5	15,0	14,0	130,0	118,0
4"	114,3	101,6	3,0	2,5	18,0	16,0	165,0	150,0
5"	141,3	127,0	3,0	2,5	20,0	20,0	190,0	175,0
6"	168,3	152,4	3,0	2,5	24,0	22,0	216,0	200,0
8"	219,0	203,2	3,0	3,0	26,0	26,0	274,0	260,0
10"	273,0	254,0	3,0	3,0	26,0	26,0	333,0	312,0
12"	324,0	305,0	3,0	3,0	28,0	28,0	389,0	365,0
14"	356,0	356,0	3,0	3,0	30,0	30,0	420,0	420,0
16"	406,0	406,0	3,0	3,0	30,0	30,0	470,0	470,0
18"	457,0	457,0	4,0	4,0	30,0	30,0	520,0	520,0
20"	508,0	508,0	4,0	4,0	30,0	30,0	570,0	570,0
24"	610,0	610,0	4,0	4,0	30,0	30,0	675,0	675,0

Tabela de Códigos - Pestana

Ø Nominal (pol)	Pestana Curta	Pestana Longa	Ø Nominal (pol)	Pestana Curta	Pestana Longa
1/2"	5263	16627	6	16723	19238
3/4"	5264	16628	8	17687	19239
1"	5265	16629	10	17686	19240
1.1/4"	5266	16630	12	19232	19241
1.1/2"	5267	16631	14	4720	19242
2"	5269	16632	16	19233	19243
2.1/2"	5268	16633	18	19234	19244
3"	5270	16634	20	19235	19245
4"	5262	16626	22	19236	19246
5"	19231	19247	24	19230	19237