



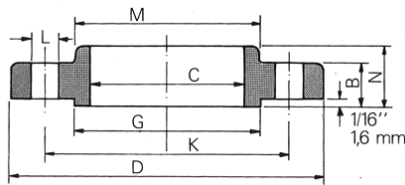
### Características

Flanges em aço carbono forjado ASTM A 105. Os flanges são fornecidos furados, faceados e com o assentamento das porcas usinado. As medidas "J" e "F" devem acompanhar o diâmetro interno do tubo. O ressalto de 1/16" já está incluído na espessura e na altura do flange. Construção segundo ANSI B 16.5

**FIG. 128**



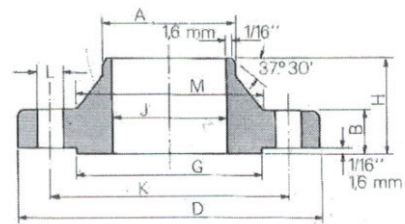
**Flange sobreposto (Slip-on)**



**FIG. 129**



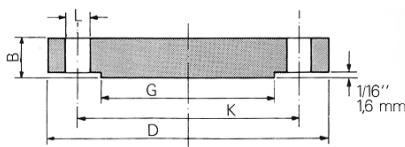
**Flange com pescoço (WN)**



**FIG. 130**



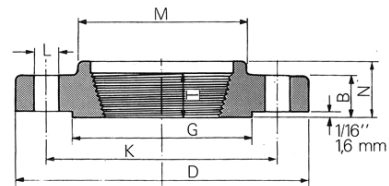
**Flange cego**



**FIG. 228**



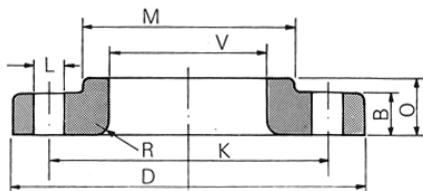
**Flange roscado**



**FIG. 229**



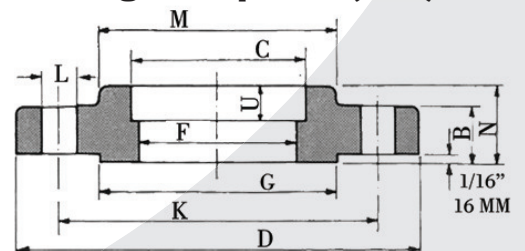
**Flange Lap - joint**



**FIG. 230**



**Flange soquete (SW)**



# FLANGES

## Aço Carbono Forjado

## Classe 150

Ø Nominal (pol)	Dimensões em		Dimensões																Furos			Sobrepeso OS	Soquete SW	Roscado	Peso	Com Pescoço WN		Lap joint		Cego	
	D	G	M	B	Nº	L	K	A	H	N	O	T	U	R	J	C	F	V	Cod.	Peso	Cod.					Peso	Cod.	Peso	Cod.	Peso	Cod.
1/2	3.1/2	1.3/8	1.3/16	7.16	4	5/8	2.3/8	0.84	1.1/8	5/8	5/8	5/8	3/8	1/8	0.62	0.88	0.62	0.90	772	10971	4346	0.5	868	0.9	10895	0.5	606	0.5			
3/4	3.7/8	1.11/16	1.1/2	1/2	4	5/8	2.3/4	1.05	2.1/16	5/8	5/8	5/8	7/16	1/8	0.82	1.09	0.82	1.11	778	4049	4347	0.9	869	0.9	10896	0.9	607	0.9			
1	4.1/4	2	1.15/16	9/16	4	5/8	3.1/8	1.32	2.3/16	11/16	11/16	11/16	1/2	1/8	1.05	1.36	1.05	1.38	779	4048	4348	0.9	870	1.4	10897	0.9	608	0.9			
1.1/4	4.5/8	2.1/2	2.5/16	5/8	4	5/8	3.1/2	1.66	2.1/4	13/16	13/16	13/16	9/16	3/16	1.38	1.70	1.38	1.72	780	10972	4349	1.4	871	1.4	10898	1.4	609	1.4			
1.1/2	5	2.7/8	2.9/16	11/16	4	5/8	3.7/8	1.90	2.7/16	7/8	7/8	7/8	5/8	1/4	1.61	1.95	1.61	1.97	781	3947	4350	1.4	872	1.8	10899	1.4	610	1.8			
2	6	3.5/8	3.1/16	3/4	4	3/4	4.3/4	2.38	2.1/2	1	1	1	11/16	5/16	2.07	2.44	2.07	2.46	782	3948	4351	2.3	873	2.7	10900	2.3	611	2.3			
2.1/2	7	4.1/8	3.9/16	7/8	4	3/4	5.1/2	2.88	2.3/4	1.1/8	1.1/8	1.1/8	3/4	5/16	2.47	2.94	2.47	2.97	783	10973	4352	3.2	874	3.6	10901	3.2	612	3.2			
3	7.1/2	5	4.1/4	15/16	4	3/4	6	3.50	2.3/4	1.3/16	1.3/16	1.3/16	3/8	3/8	3.07	3.57	3.07	3.60	784	4877	4353	3.6	875	4.5	10902	3.6	613	4.1			
3.1/2	8.1/2	5.1/2	4.13/16	15/16	8	3/4	7	4.00	2.13/16	1.1/4	1.1/4	1.1/4	7/8	3/8	3.55	4.07	3.55	4.10	4085	17098	17099	5.0	17100	5.4	4388	5.0	4084	5.9			
4	9	6.3/16	5.5/16	15/16	8	3/4	7.1/2	4.50	3	1.5/16	1.5/16	1.5/16	15/16	7/16	4.03	4.57	4.03	4.60	785	11008	10974	5.9	876	6.8	10903	5.9	614	7.7			
5	10	7.5/16	6.7/16	15/16	8	7/8	8.1/2	5.56	3.1/2	1.7/16	1.7/16	1.7/16	15/16	7/16	5.05	5.66	5.05	5.69	2056	11009	10975	6.8	877	8.6	10904	6.8	615	9.1			
6	11	8.1/2	7.9/16	1	8	7/8	9.1/2	6.62	3.1/2	1.9/16	1.9/16	1.9/16	1.1/16	1/2	6.07	6.72	6.07	6.75	786	11010	10976	8.6	878	10.9	10905	8.6	616	11.8			
8	13.1/2	10.5/8	9.11/16	1.1/8	8	7/8	11.3/14	8.62	4	1.3/4	1.3/4	1.3/4	1.1/4	1/2	7.98	8.72	7.98	8.75	787	11011	10977	13.6	879	17.7	10906	13.6	617	20.4			
10	16	12.3/4	12	1.3/16	12	1	14.1/4	10.75	4	1.15/16	1.15/16	1.15/16	1.15/16	1/2	10.02	10.88	10.02	10.92	788	11012	10978	19.5	880	23.6	10907	19.5	618	31.8			
12	19	15	14.3/8	1.1/4	12	1	17	12.75	4.1/2	2.3/16	2.3/16	2.3/16	1.9/16	1/2	12.00	12.88	12	12.92	789	11013	10979	29.0	881	36.3	10908	29.0	619	49.9			
14	21	16.1/4	15.3/4	1.3/8	12	1.1/8	18.3/4	14.00	5	2.1/4	3.1/8	2.1/2	1.5/8	1/2	13.25	14.14	13.25	14.18	790	11014	10980	41.0	882	50.0	10909	41.0	620	63.5			
16	23.1/2	18.1/2	18	1.7/16	16	1.1/8	21.1/4	16.00	5	2.1/2	3.7/16	2.1/2	1.3/4	1/2	15.25	16.16	15.25	16.19	791	11015	3810	44.5	883	64.0	10910	44.5	621	81.6			
18	25	21	19.7/8	1.9/16	16	1.1/4	22.3/4	18.00	5.1/2	2.11/16	3.13/16	2.11/16	1.15/16	1/2	17.25	18.18	17.25	18.20	792	11016	10981	59.0	884	68.0	10911	59.0	622	99.8			
20	27.1/2	23	22	1.11/16	20	1.1/4	25	20.00	5.11/16	2.7/8	4.1/16	2.7/8	2.1/8	1/2	19.25	20.20	19.25	20.25	793	11017	10982	75.0	885	81.6	10912	75.0	623	129			
24	32	27.1/4	26.1/8	1.7/8	20	1.3/8	29.1/2	24.00	6	3.1/4	4.3/8	3.1/4	2.1/2	1/2	23.25	24.25	23.25	24.25	794	11018	10983	99.8	886	118	10913	99.8	624	195			