



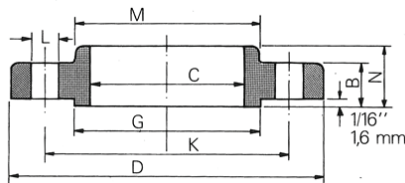
### Características

Flanges em aço carbono forjado ASTM A 105. Os flanges são fornecidos furados, faceados e com assentamento das porcas usinado. As medidas "J" e "F" devem acompanhar o diâmetro interno do tubo. O ressalto de 1/16" já está incluído na espessura e na altura do flange. Construção segundo ANSIB 16.5

**FIG. 128**



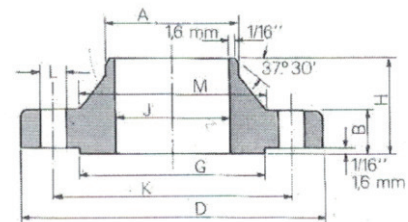
**Flange sobreposto (Slip-on)**



**FIG. 129**



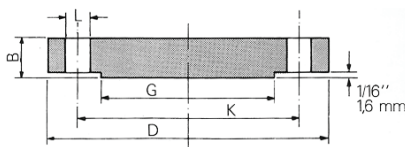
**Flange com pescoço (WN)**



**FIG. 130**



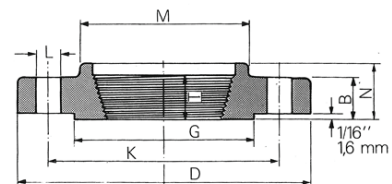
**Flange cego**



**FIG. 228**



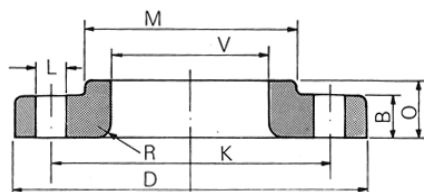
**Flange roscado**



**FIG. 229**



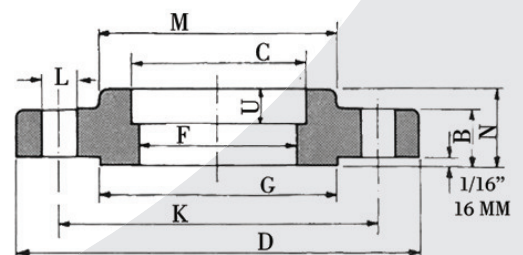
**Flange Lap - joint**



**FIG. 230**



**Flange soquete (SW)**



# FLANGES

## Aço Carbono Forjado

## Classe 300

Ø Nominal (pol)	Dimensões		Dimensões																Furos			Sobre-posto SW		Roscado		Peso		Com pescoço WN		Lap-Joint		Cego			
	D	G	M	B	Nº	L	K	A	H	N	O	T	U	R	J	E	C	F	V	Sobre-posto SW	Cod.	Cod.	SW	Cod.	Cod.	Peso	Cod.	Cod.	Peso	Cod.	Cod.	Peso	Cod.	Peso	Cod.
1/2	3.3/4	1.3/8	1.1/2	9/16	4	5/8	2.5/8	0.84	2.1/16	7/8	7/8	5/8	3/8	1/8	0.62	0.93	0.88	0.62	0.90	795	11003	10819	889	890	10914	889	890	10914	0.9	0.9	627	0.9			
3/4	4.5/8	1.11/16	1.7/8	5/8	4	3/4	3.1/4	1.05	2.1/4	1	1	5/8	7/16	1/8	0.82	1.14	1.09	0.82	1.11	796	5327	10820	890	891	10915	890	891	10915	1.4	1.4	628	1.4			
1	4.7/8	2	2.1/8	11/16	4	3/4	3.1/2	1.32	2.7/16	1.1/16	1.1/16	11/16	1/2	1/8	1.05	1.41	1.36	1.05	1.38	797	11004	10821	891	892	10916	891	892	10916	1.4	1.4	629	1.4			
1.1/4	5.1/4	2.1/2	2.1/2	3/4	4	3/4	3.7/8	1.66	2.9/16	1.1/16	1.1/16	13/16	9/16	3/16	1.38	1.75	1.70	1.38	1.72	798	11005	10822	892	893	10917	892	893	10917	1.8	1.8	630	1.8			
1.1/2	6.1/8	2.7/8	2.3/4	13/16	4	7/8	4.1/2	1.90	2.11/16	1.3/16	1.3/16	7/8	5/8	1/4	1.61	1.99	1.95	1.61	1.97	799	5325	10823	893	894	10918	893	894	10918	2.7	2.7	631	2.7			
2	6.1/2	3.5/8	3.5/16	7/8	8	3/4	5	2.38	2.3/4	1.5/16	1.5/16	1.1/8	11/16	5/16	2.07	2.50	2.44	2.07	2.46	800	4047	10824	894	895	10919	894	895	10919	3.2	3.2	632	3.6			
2.1/2	7.1/2	4.1/8	3.15/16	1	8	7/8	5.7/8	2.88	3	1.1/2	1.1/2	1.1/4	3/4	5/16	2.47	3.00	2.94	2.47	2.97	801	11006	10825	895	896	10920	895	896	10920	4.5	4.5	633	5.4			
3	8.1/4	5	4.5/8	1.1/8	8	7/8	6.5/8	3.50	3.1/8	1.11/16	1.11/16	1.1/4	13/16	3/8	3.07	3.63	3.57	3.07	3.60	802	11007	10826	896	897	10921	896	897	10921	5.9	5.9	634	7.3			
3.1/2	9	5.1/2	5.1/4	1.3/16	8	7/8	7.1/4	4.00	3.3/16	1.3/4	1.3/4	1.7/16	7/8	3/8	3.55	4.13	4.07	3.55	4.10	17104	17102	17103	897	898	10922	897	898	10922	7.7	7.7	17101	9.5			
4	10	6.3/16	5.3/4	1.1/4	8	7/8	7.7/8	4.50	3.3/8	1.7/8	1.7/8	1.7/16	15/16	7/16	4.03	4.63	4.57	4.03	4.60	803	11008	10827	897	898	10923	897	898	10923	10.00	10.00	635	12.2			
5	11	7.5/16	7	1.3/8	8	7/8	9.1/4	5.56	3.7/8	2	2	1.11/16	-	7/16	5.05	5.69	5.66	-	5.69	2903	11009	10828	898	899	10924	898	899	10924	12.7	12.7	636	15.9			
6	12.1/2	8.1/2	8.1/8	1.7/16	12	7/8	10.5/8	6.62	3.7/8	2.1/16	2.1/16	1.13/16	-	1/2	6.07	6.75	6.72	-	6.75	804	11010	10829	899	900	10925	899	900	10925	17.7	17.7	637	22.7			
8	15	10.5/8	10.1/4	1.5/8	12	1	13	8.62	4.3/8	2.7/16	2.7/16	2	-	1/2	7.98	8.75	8.72	-	8.75	841	11011	10830	900	901	10926	900	901	10926	26.3	26.3	638	36.7			
10	17.1/2	12.3/4	12.5/8	1.7/8	16	1.1/8	15.1/4	10.75	4.5/8	2.5/8	3.3/4	2.3/16	-	1/2	10.02	10.88	10.88	-	10.92	806	11012	10831	901	902	10927	901	902	10927	36.7	36.7	639	56.7			
12	20.1/2	15	14.3/4	2	16	1.1/4	17.3/4	12.75	5.1/8	2.7/8	4	2.3/8	-	1/2	12.00	12.94	12.88	-	12.92	807	11013	10832	902	903	10928	902	903	10928	52.2	52.2	640	83.9			
14	23	16.1/4	16.3/4	2.1/8	20	1.1/4	20.1/4	14.00	5.5/8	3	4.3/8	2.1/2	-	1/2	13.29	14.19	14.14	-	14.18	844	11014	10833	903	904	10929	903	904	10929	74.8	74.8	641	113			
16	25.1/2	18.1/2	19	2.1/4	20	1.3/8	22.1/2	16.00	5.3/4	3.1/4	4.3/4	1.11/16	-	1/2	15.25	16.19	16.16	-	16.10	845	11015	10834	904	905	10930	904	905	10930	86.2	86.2	642	134			
18	28	21	21	2.3/8	24	1.33/8	24.3/4	18.00	6.1/4	3.1/2	5.1/8	2.3/4	-	1/2	17.25	18.19	18.18	-	18.20	810	11016	10835	905	906	10931	905	906	10931	113	113	643	179			
20	30.1/2	23	23.1/8	2.1/2	24	1.3/8	27	20.00	6.3/8	3.3/4	5.1/2	2.7/8	-	1/2	19.25	20.19	20.20	-	20.25	847	11017	10836	906	907	10932	906	907	10932	143	143	644	229			
24	36	27.1/4	27.5/8	2.3/4	24	1.5/8	32	24.00	6.5/8	4.3/16	6	3.1/4	-	1/2	23.25	24.19	24.25	-	24.25	848	11018	10837	907	908	10933	907	908	10933	215	215	645	358			